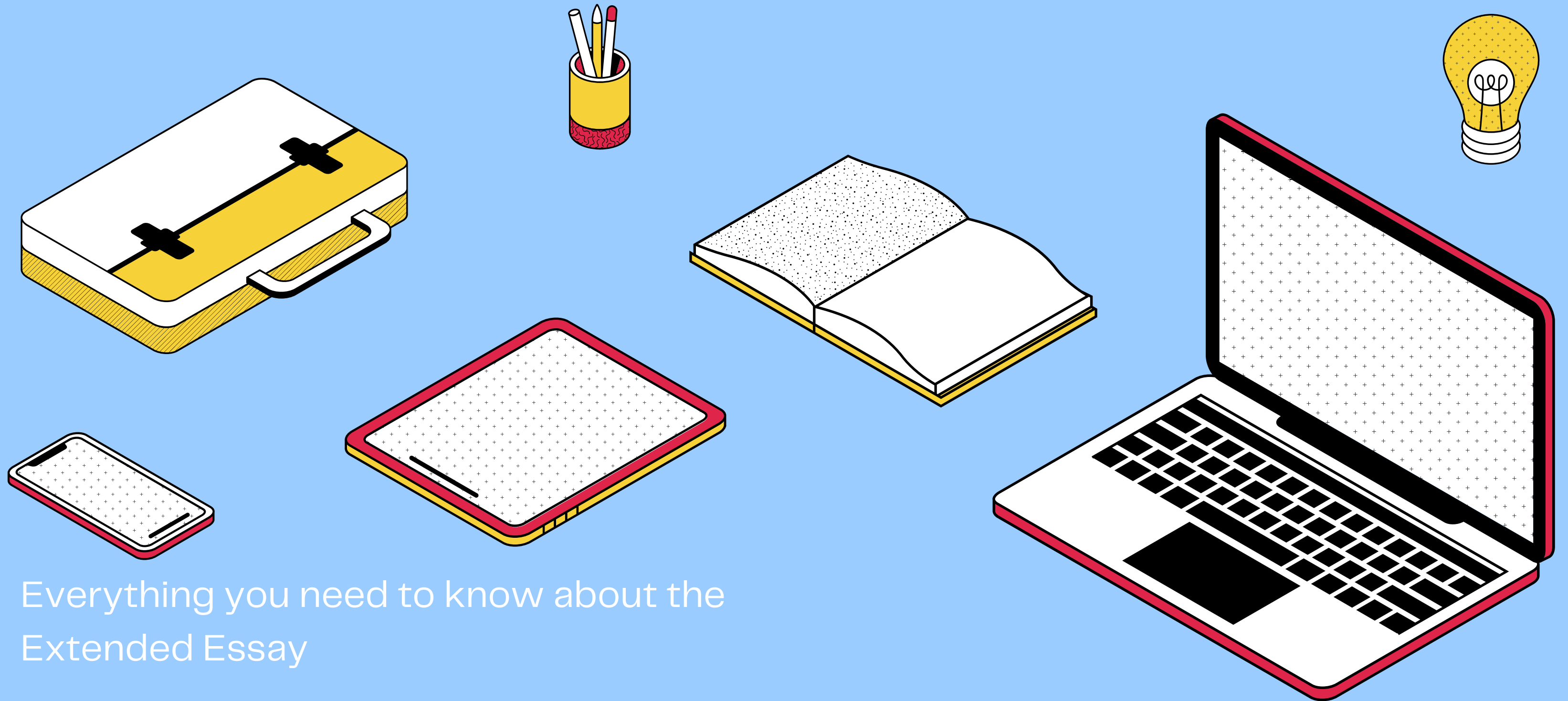
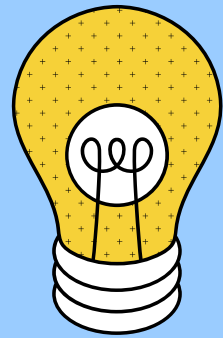


THE EXTENDED ESSAY



Everything you need to know about the
Extended Essay



WHAT IS THE EXTENDED ESSAY?

The Extended Essay is a 4,000-word student-produced essay on a topic of your choice. The topic can be chosen from History or English (literature)*. You will be assigned a mentor and you usually start this process during your junior year. You will be asked to write about your chosen topic and develop the capacity to synthesize information. This essay is a BIG part of your IB score, so do not take this lightly.

*Subjects vary by schools.

HELPFUL LINKS

- <https://www.ibo.org/programmes/diplomaprogramme/curriculum/extended-essay/what-is-the-extended-essay/>
- <https://blog.prepscholar.com/comprehensive-guide-to-ib-extended-essay-tipsgrading-guideline-and-sample-essays>

